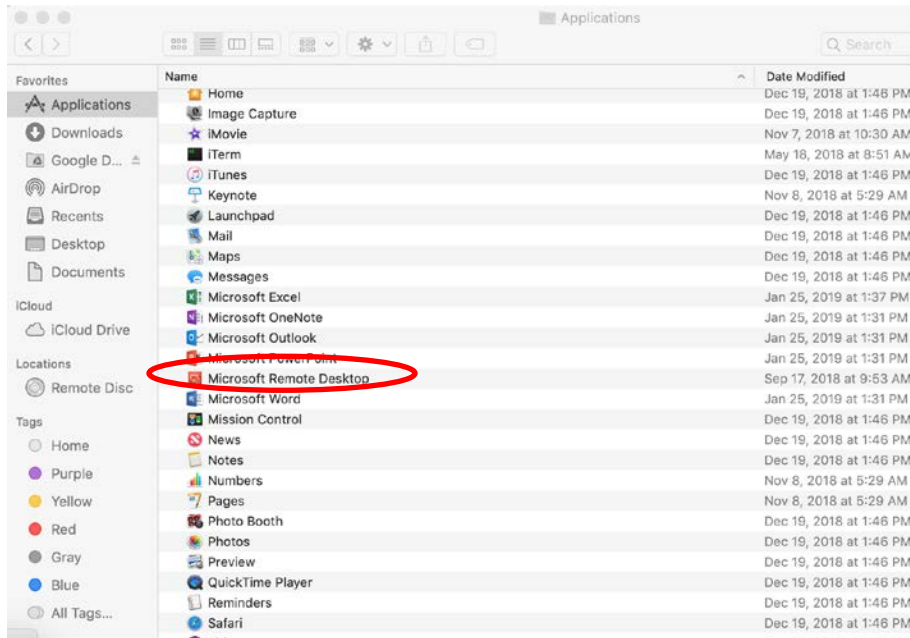


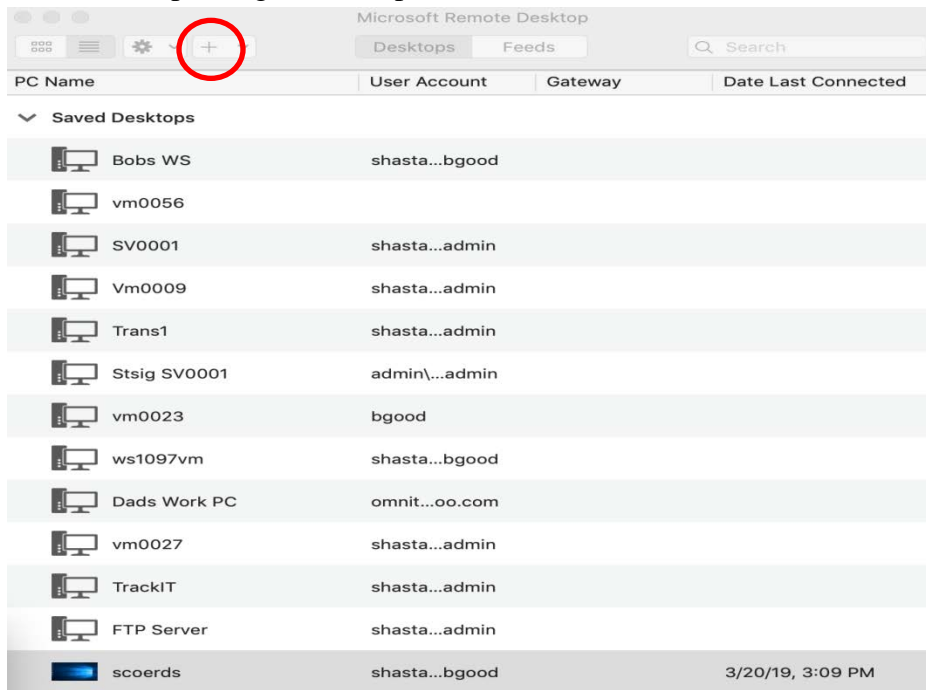
Shasta County Office of Education

Escape Remote Access for Mac users

1. Via Finder>Applications, open Microsoft Remote Desktop Connection



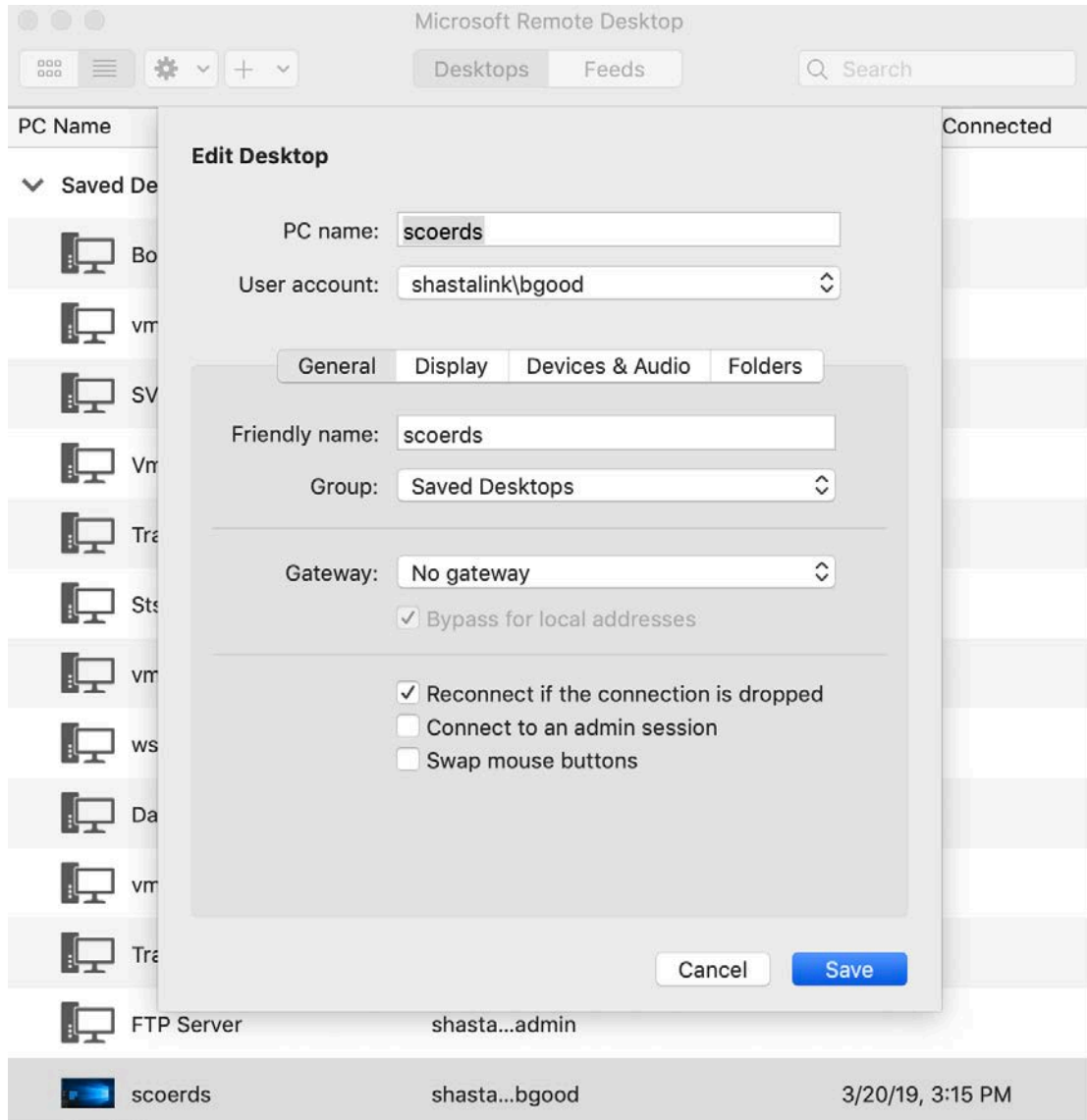
2. Click on the plus sign>Desktop to add *scoerds* remote connection



Shasta County Office of Education

Escape Remote Access for Mac users

3. Verify that the fields in the screenshot below are as follows

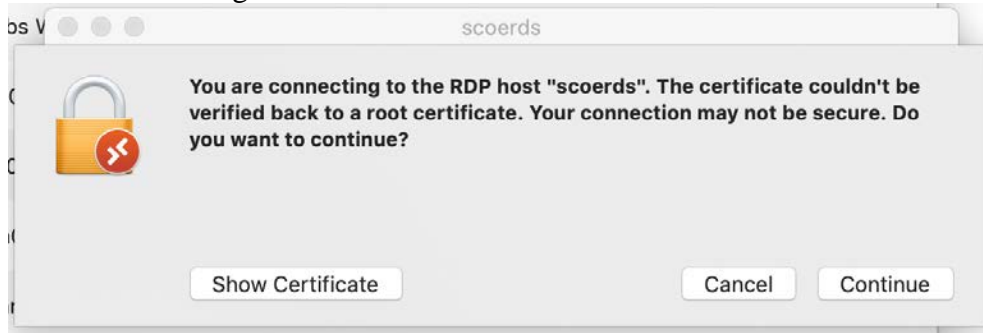


Press the Save button

Shasta County Office of Education

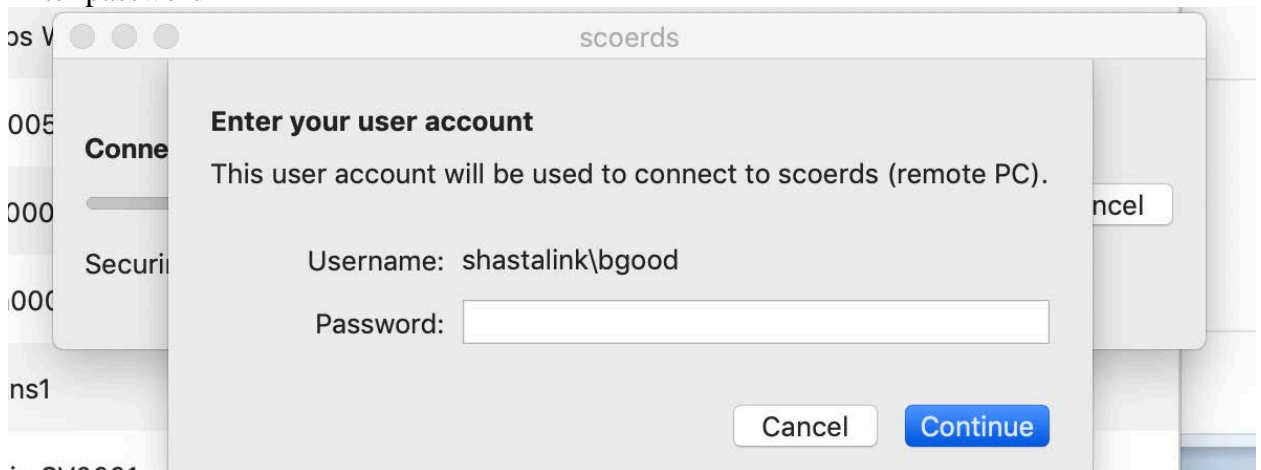
Escape Remote Access for Mac users

4. Double click on *scoerds* to open the desktop connection. You will be prompted with a certificate warning



Click on the Continue button

5. Enter password



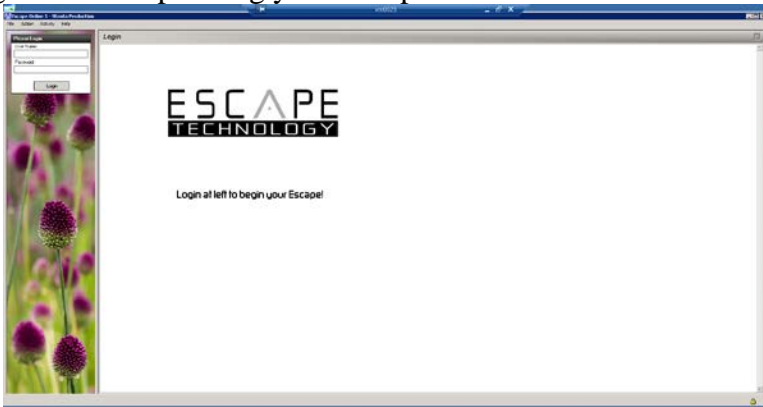
You may receive the certificate warning again, press Continue button

6. Your connection to *scoerds* should be established

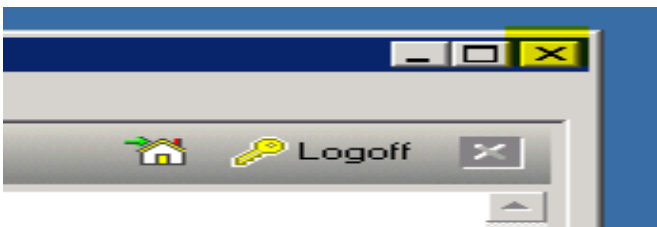
Shasta County Office of Education

Escape Remote Access for Mac users

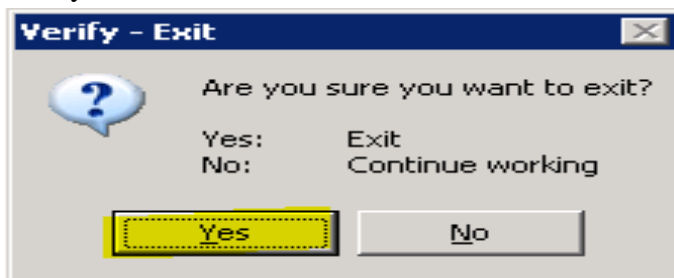
7. Login into Escape using your Escape User Name and Password



8. When you are done in Escape, log out by pressing the X at the top right of the Escape session



9. Verify Exit



10. Log Off of the *scoerds* server

Note: Clicking the X at the top of the desktop connection does not log you off the scoerds server. To log off, do the following:

- Click the start/menu button in the lower left corner of the remote connection desktop
- Click the *Person* button
- Choose *Sign out*

Shasta County Office of Education

Escape Remote Access for Mac users

