

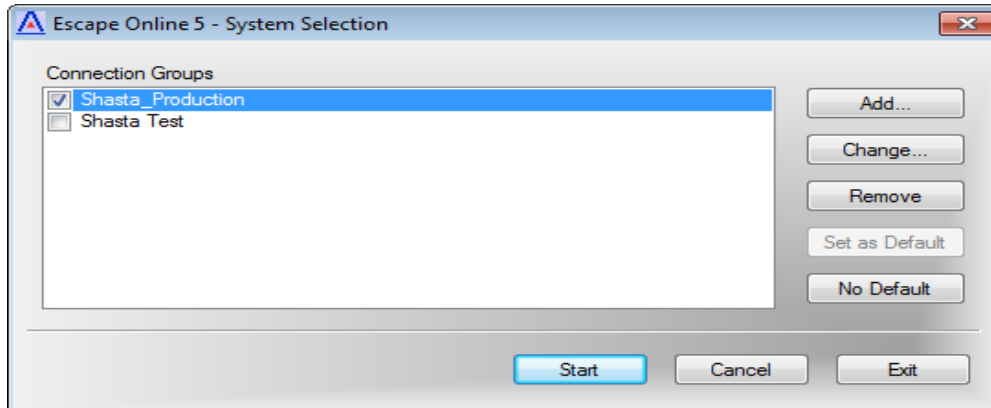
# Shasta County Office of Education

## Escape Test Environment Login

---

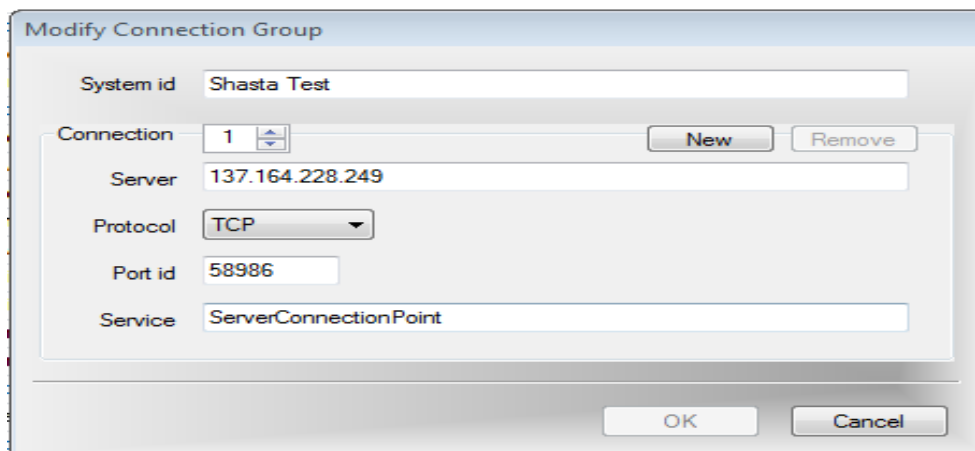
If you do not have the option to login to Escape TEST when accessing Escape software, perform the steps below.

- 1) Hold down the **Shift** key and double click on the **Escape icon**. Keep holding the shift key down until you see the *Escape Online 5–System Selection* box shown below.



Note: If you want the option to select Production or Test upon logging in, select the **No Default** button. The next time you login, you will not have to hold down the shift key, but you **WILL** have to **carefully choose** Production or Test each time you login.

- 2) Highlight **Shasta Test** and click **Change...** button.



- 3) Verify that the fields in the *Modify Connection Group* screen shot above match your setup. Change any fields that do not agree and click **OK** button.
- 4) Highlight **Shasta Test** in the *Escape Online 5–System Selection* box and then click the **Start** button.