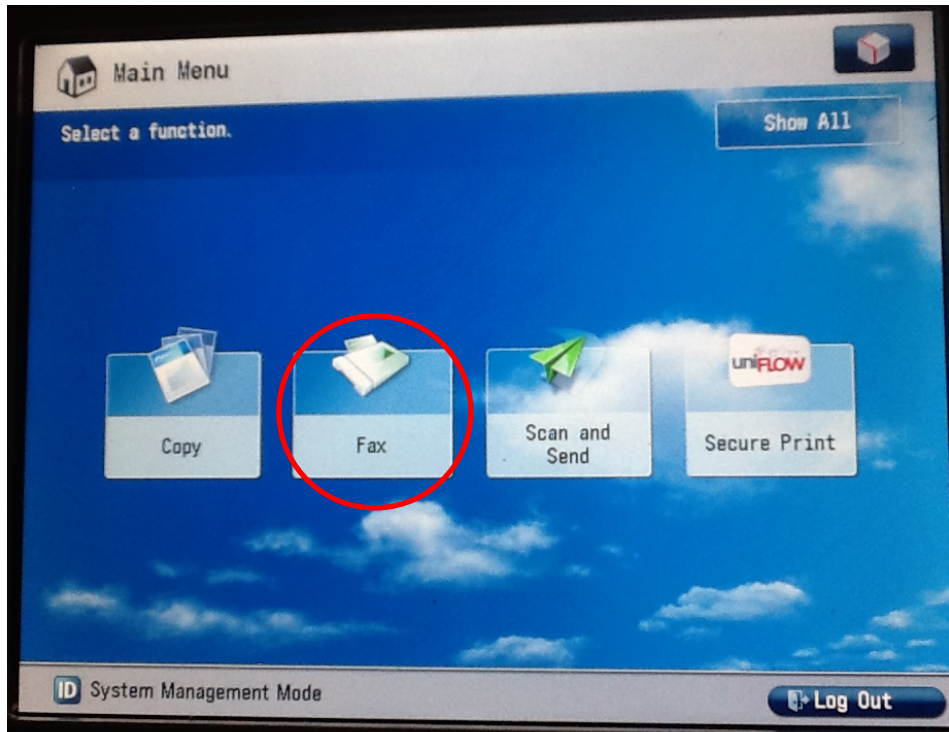


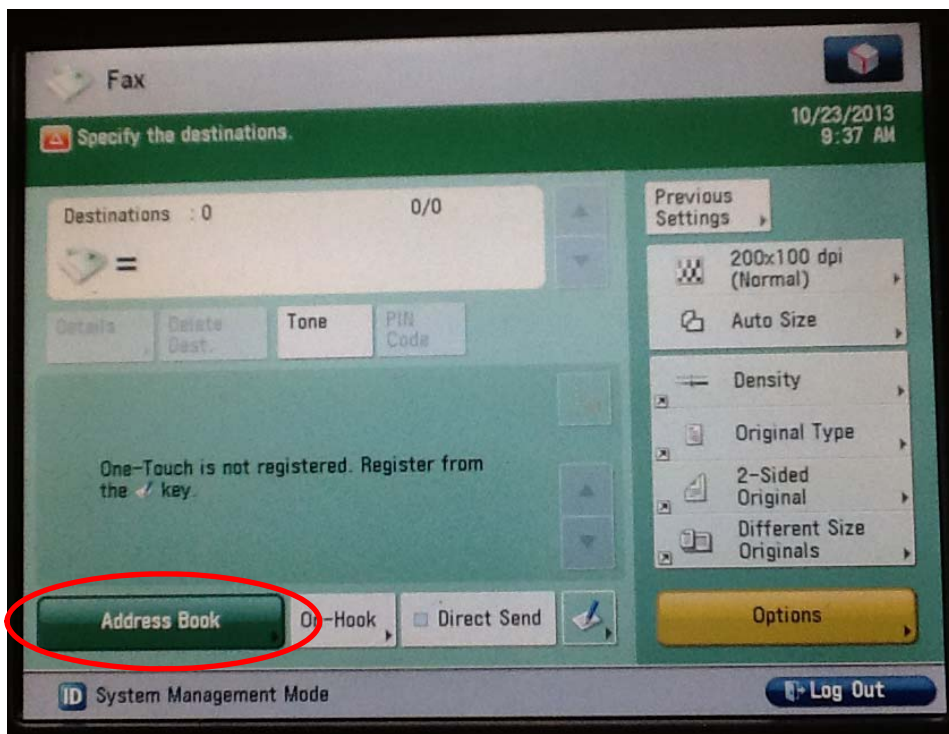
Locating Fax Groups on Canon Copiers

Locating the fax groups can be a bit evasive if you don't know where to look.

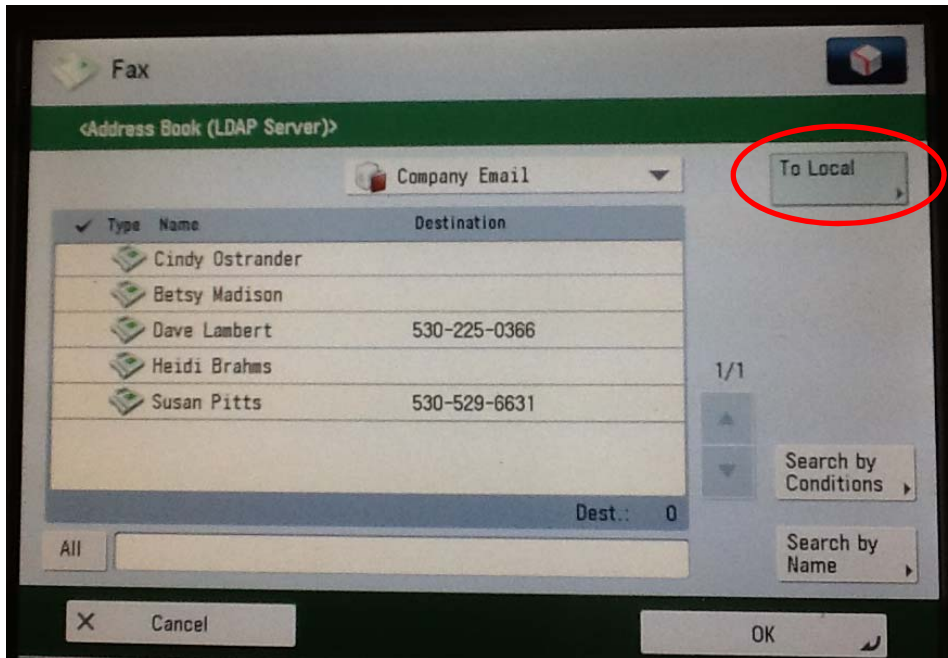
Log on to the copier and choose the fax option.



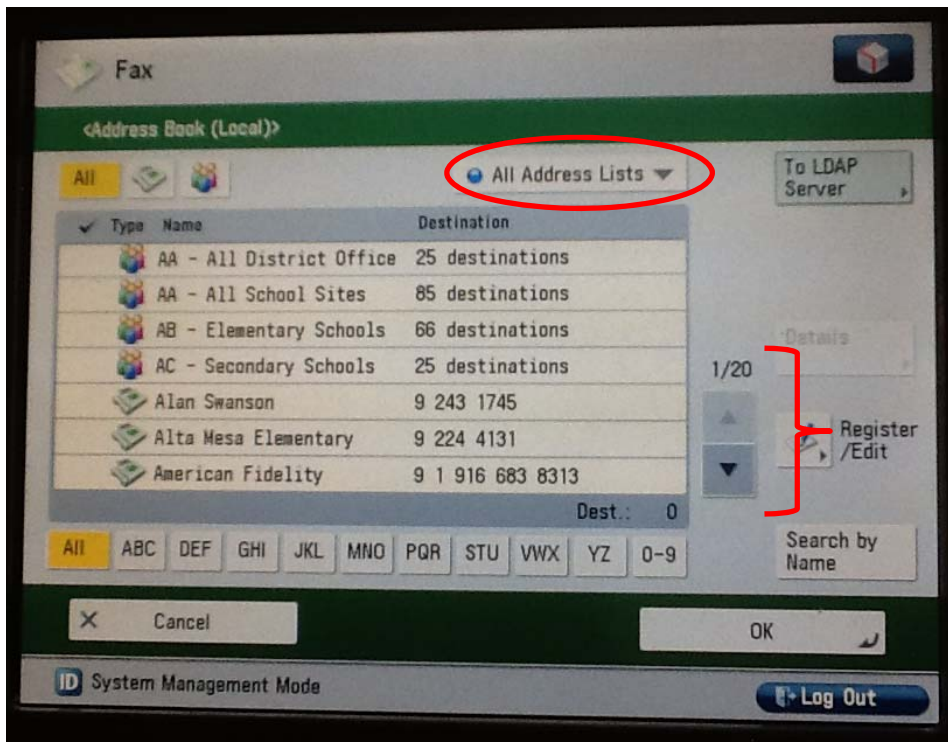
Select the address book option in the lower left corner.



A list of fax numbers, if any, appear for those numbers that have been added to the local machine. Select the 'to local' button to request the machine to look to the LDAP server.



Notice groups and individual names appear in the screen. You can scroll through the individual pages (20 in our example below), or you may select the drop down list.



Once selected, the pre-programmed fax list appears. Select the appropriate group and continue sending your fax.

