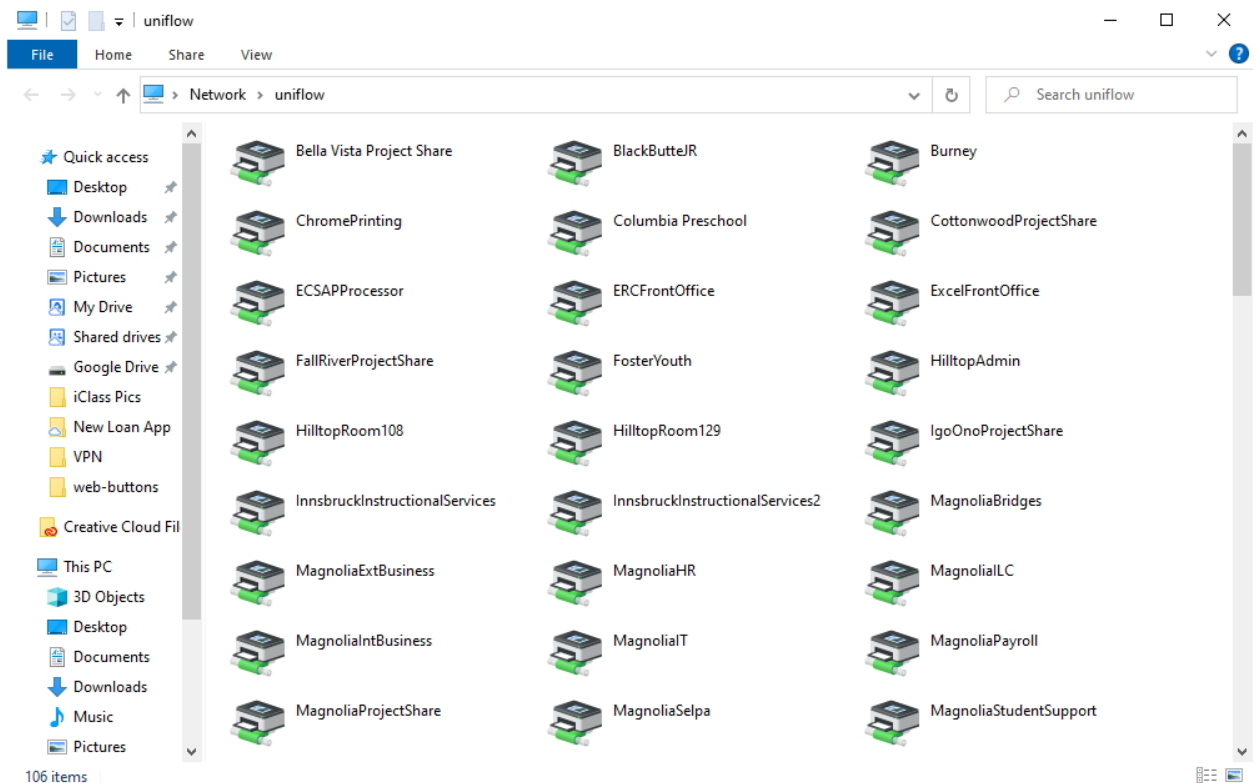


How to Add a SCOE Network Printer to your Workstation

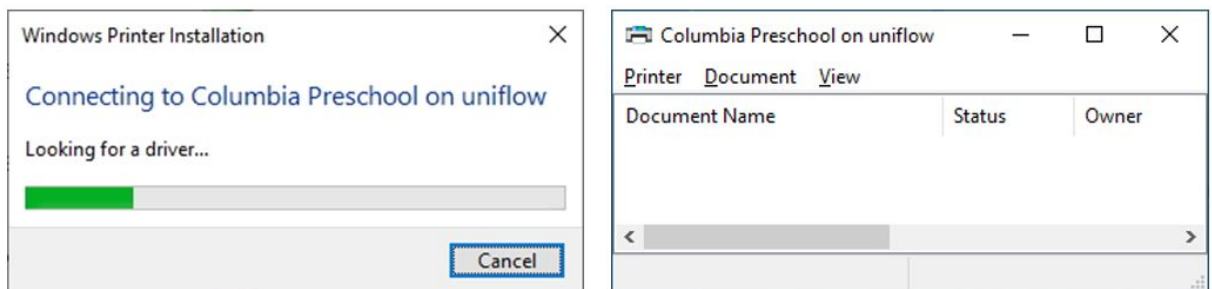
1. From the lower left corner of your desktop, type `\\uniflow` into the search field and press enter.



2. From the list of available printers, double-click on the icon for your appropriate printer.



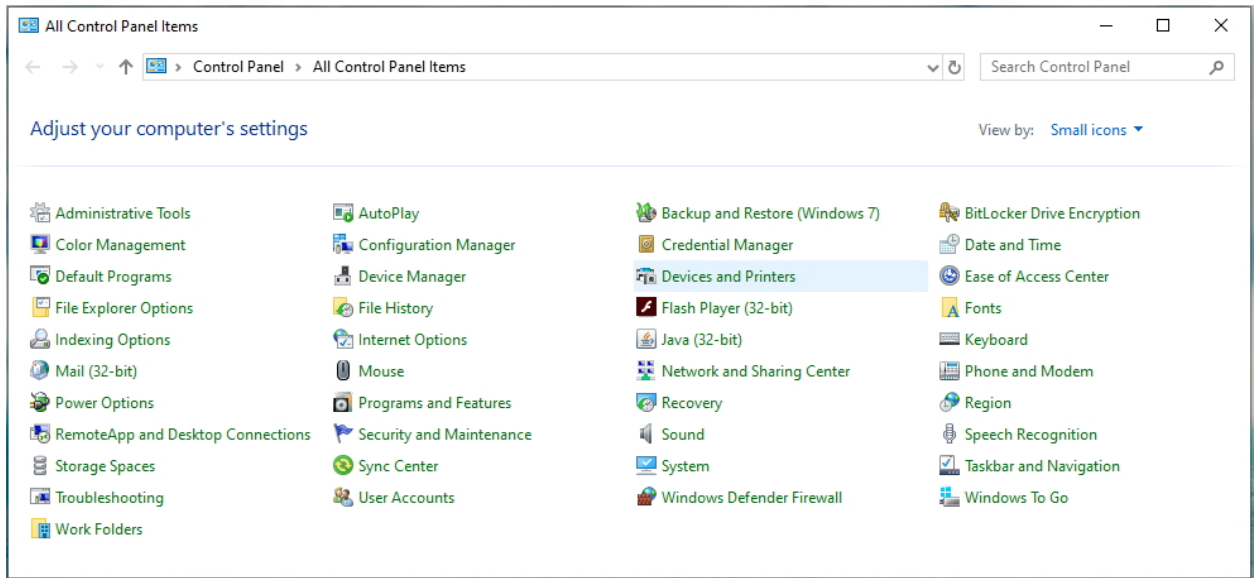
3. Once the print drivers complete the installation process, you will see the print queue open.



4. To make the printer your default device, type Control Panel into the search field on your desktop and press enter.



5. Double click on Devices and Printer



6. Find your newly added printer from the list displayed, right click on the printer icon and select Set as Default.

